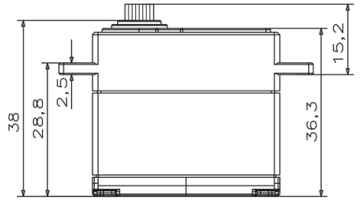
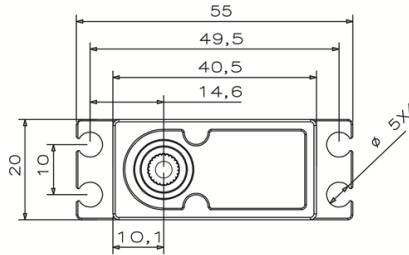
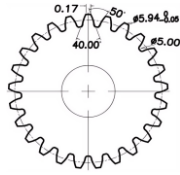
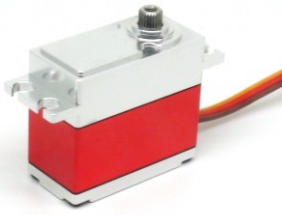


# FZ825 Technical Specification

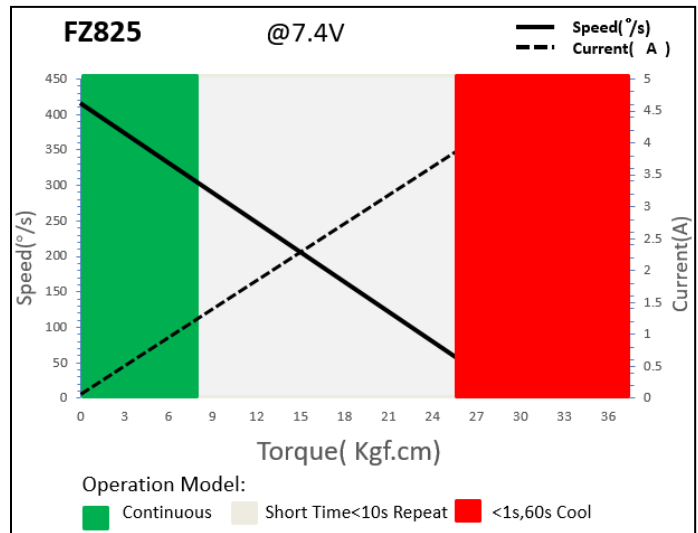


25T 6mm Output Shaft Spline

## 1. Operating Data

Rated Voltage	DC7.4V
Voltage Range	DC6.0V-8.4V
Torque	20Kgf.cm@6.0V
	25Kgf.cm @7.4V
	30Kgf.cm @8.4V
Speed	0.15sec/60°@6.0V
	0.14sec/60°@7.4V
	0.12sec/60°@8.4V
Working Frequency	1520us/333Hz
Default Travel Angle	±90° = 180° Total
Temperature Range	-10℃.....+65℃
Case Material	Aluminum Alloy
Motor Type	Coreless DC Motor
Gear Set Material	Hardened Steel
Position Sensor	Potentiometer
Case Dimensions	40.5*20*38mm±0.2mm
Weight	70g±10%

## 2. Performance



## 3. Command signal

### PWM Command Interface

Signal Voltage	HIGH: min.3.3V, max.5.0V Low: min.0.0V, max.1.5V
Pulse Lengths	1000us-2000us
Pulse Lengths for Position -90°/ 0°/+90°	1000us/1500us/2000us

## 4. Electrical Connection

<p>3 2 1</p>	Pin Assignment			
	1	Orange	Signal	PWM Command
	2	Red	DC+	Supply Voltage
	3	Brown	DC-	Supply Ground