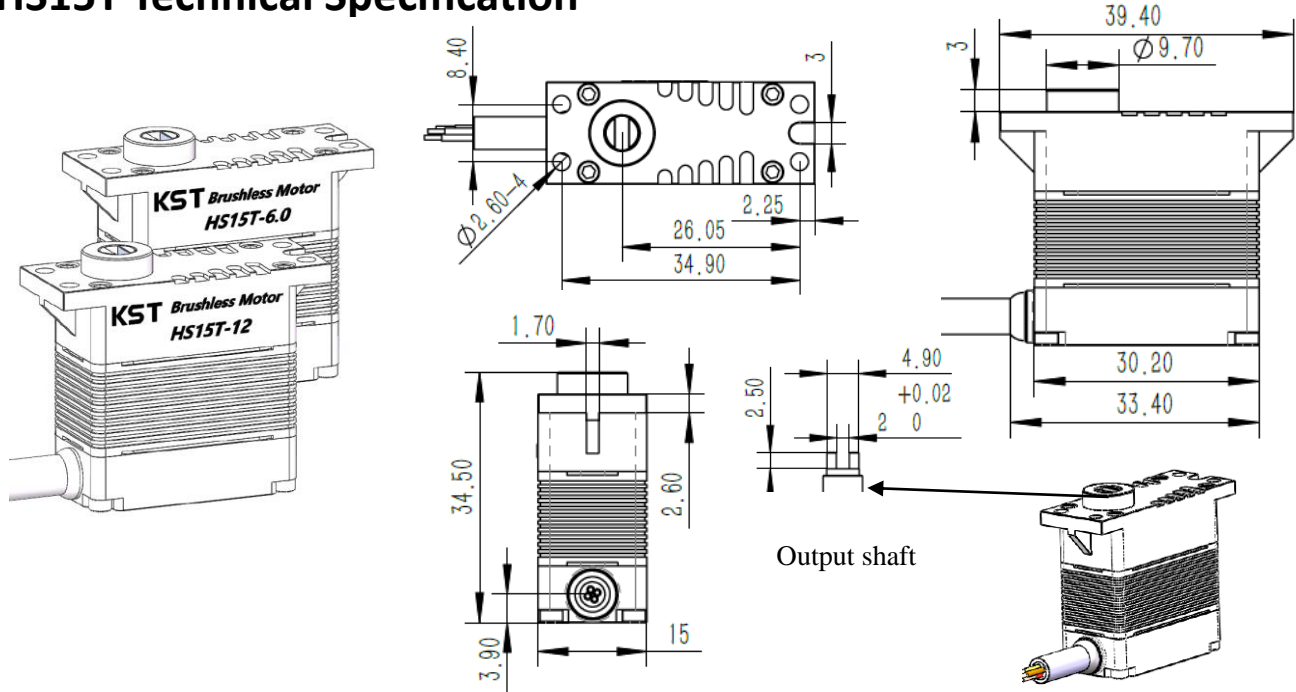


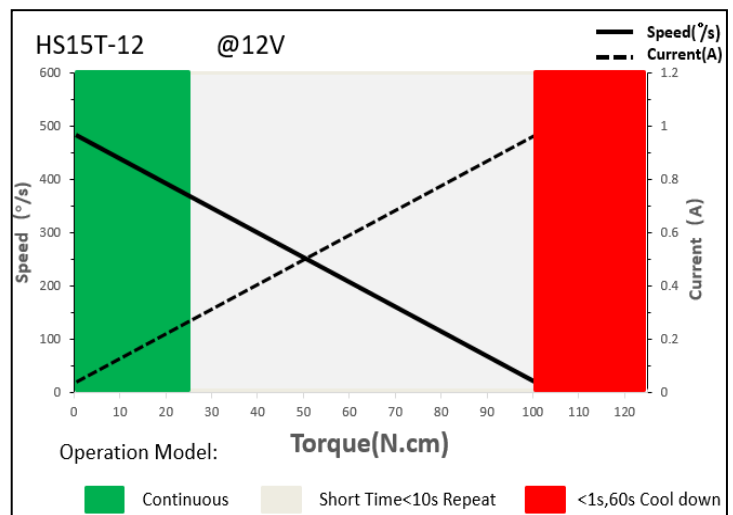
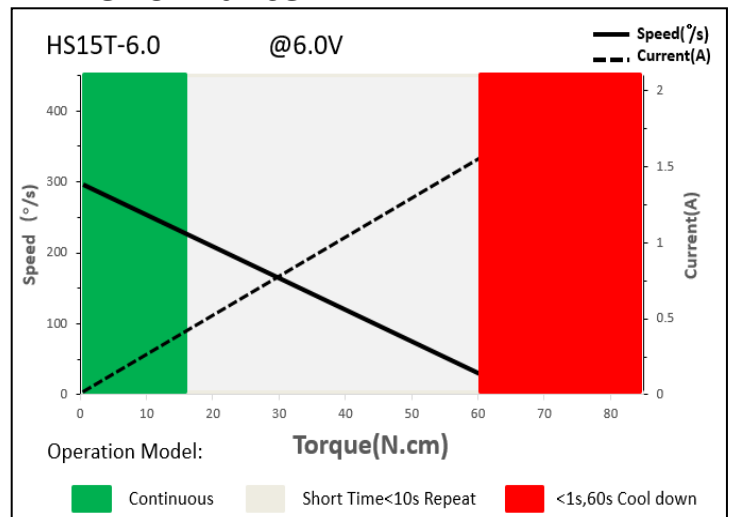
HS15T Technical Specification



1. Servo Data

	HS15T-6.0	HS15T-12
Rated Voltage	DC6.0V	DC12V
Voltage Range	DC6V-9V	DC9V-12V
Stalling Torque	1.6Kgf.cm@6V	2.5Kgf.cm@12V
Rated Torque	6.0.Kgfc.m@6V	10Kgf.cm@12V
Stalling Current	1.60A	1.00A
Rated Current	0.55A	0.30A
No-load Speed	300°/s @6.0V	480°/s @12V
Rated Speed	240°/s @6.0V	320°/s @12V
Default Travel Angle	±45° = 90° total travel	
Working Frequency	1520us/333Hz	
Temperature Range	-30°C.....+65°C	
Case Material	Aluminum Alloy	
Motor Type	Brushless DC Motor	
Gear Set Material	Hardened Steel	
Position Sensor	Contactless	
Ball Bearing	2BB	
Case Dimensions	30mm*15mm*38mm(±0.2mm)	
Weight	40g (±10%)	

2. Performance



3. Command Signal

3.1 PWM Command Interface

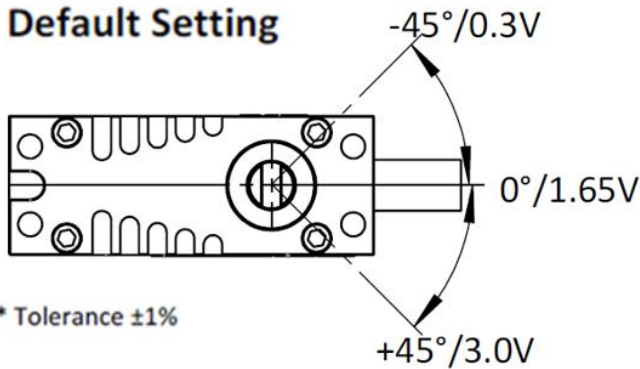
Signal Voltage	HIGH:min.3.3V,max.5.0V; Low:min.0.0V,max.1.5V
Pulse Lengths	1000us-2000us
Pulse Lengths for Position -45°/0°/+45°	1000us/1500us/2000us

3.2. Feedback Signal (Options)

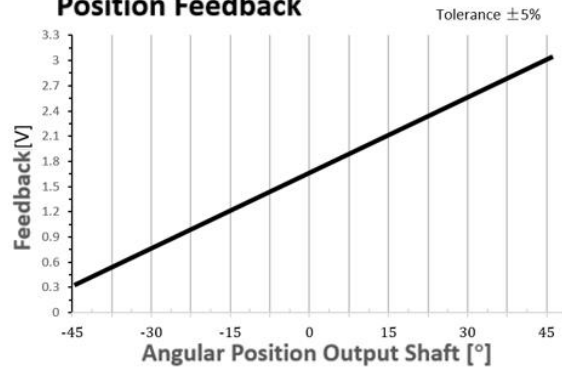
3.4.1 Position Feedback Analog Signal

The position feedback signal for voltage signal, directly related to the presents the position of the output shaft. The Reference is to supply the ground.

Default Setting



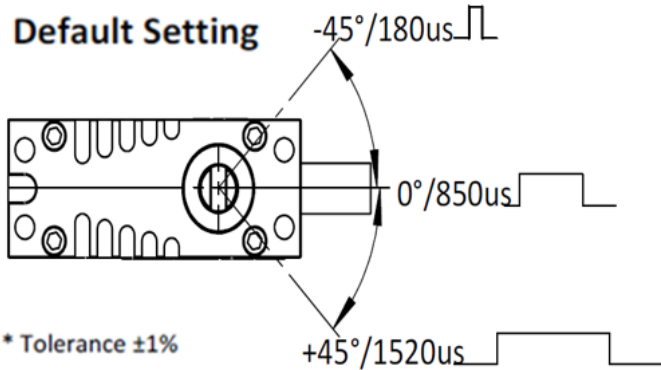
Position Feedback



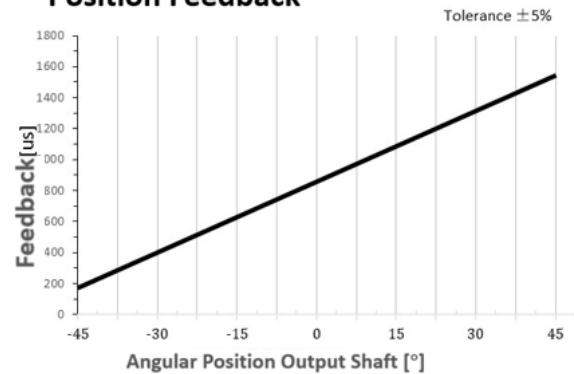
3.4.2 Position Feedback Digital Signal

The position feedback signal for PWM signal, directly related to the presents the position of the output shaft. The Reference is to supply the ground.

Default Setting



Position Feedback



4. Electrical Connection Options

4.1. Shielded Cable, Open leads. (KFVP 4*0.14 AFR250, Cable diameter ≤ ϕ 3.5mm)

Pin Assignment			
1	Red	DC+	Supply Voltage
2	Black	DC-(GND)	Supply Ground
3	White	SIG	PWM Command Signal
4	Blue	Feedback	position feedback signal,(Analog Signal V_FB& Digital Signal PWM_FB)