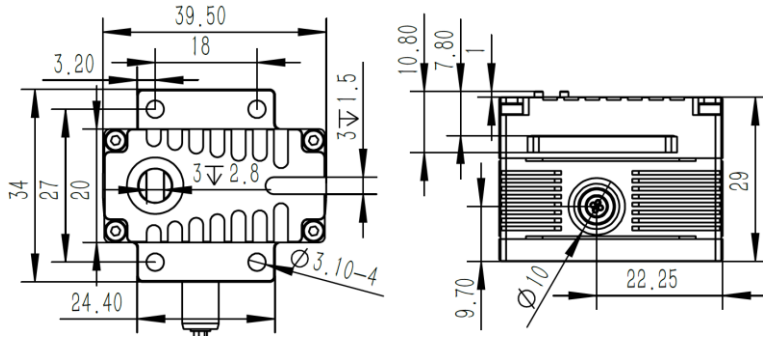
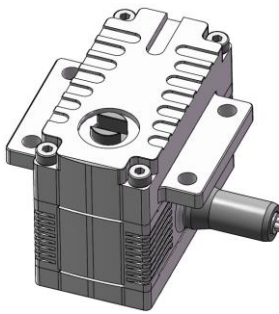


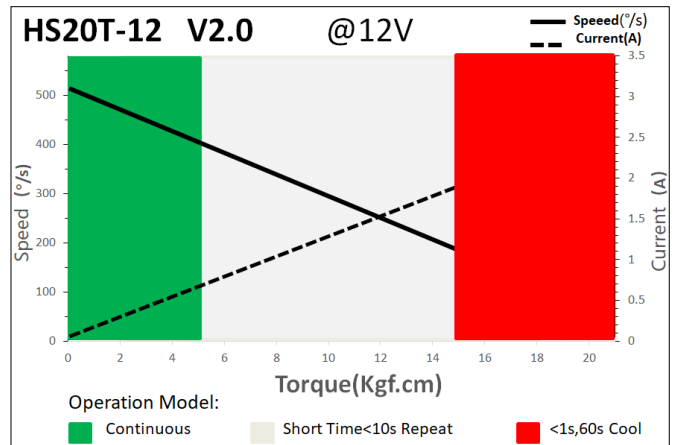
HS20T-12 V2.0 Technical Specification



1. Servo Data.

Rated Voltage	DC12V
Voltage Range	DC9V-13V
Stalling Torque	15Kgf.cm@12V
Rated Torque	5Kgf.cm@12V
Stalling Current	2.50A
Rated Current	0.50A
No-load Speed	520°/s @12V@25°C
Rated Speed	400°/s @12V@25°C
Default Travel Angle	±45° =90° total travel
Temperature Range	-30°C+65°C
Case Material	Aluminum Alloy
Motor Type	Brushless DC Motor
Gear Set Material	Hardened Steel
Position Sensor	Contactless
Ball Bearing	4BB
Case Dimensions	39.5mm*20mm*29mm±0.2mm
Weight	70g±10%

2. Performance.



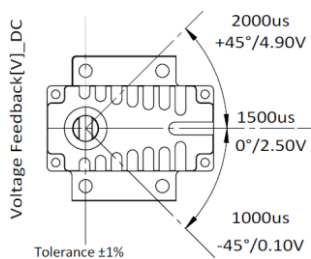
3. Command Signal

PWM Command Interface

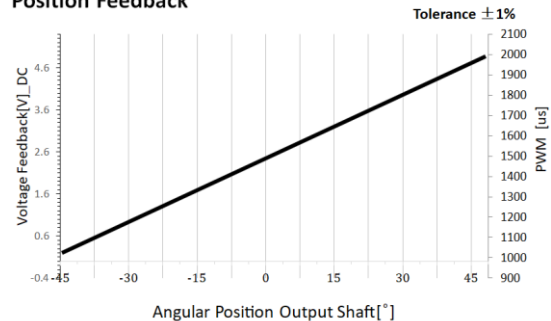
Signal Voltage	HIGH:min.3.3V,max.5.0V Low:min.0.0V,max.1.5V
Pulse Lengths	1000us-2000us
Pulse Lengths for Position	1000us/1500us/2000us -45°/ 0°/+45°

4. Position Feedback Signal

The Position Feedback signal is an analog output signal with a voltage value, which is directly related to the output shaft's angular position. The default factory setting is 1000us-2000us corresponding to 0.10V-4.90V, tolerance ±1%.



Position Feedback



5. Electrical Connection

	1	Red	DC+ Supply Voltage	4	Yellow	Position Feedback +
	2	Black	DC- Supply Ground	5	Blue	Position Feedback-
	3	White	PWM Command Signal			