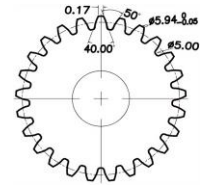
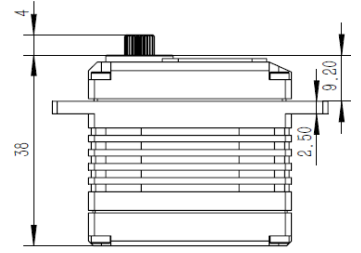
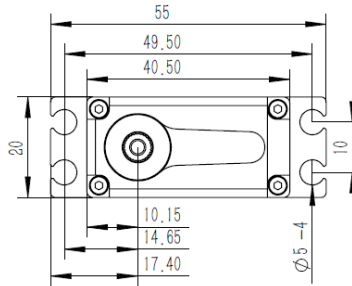


MS1035 Technical Specification



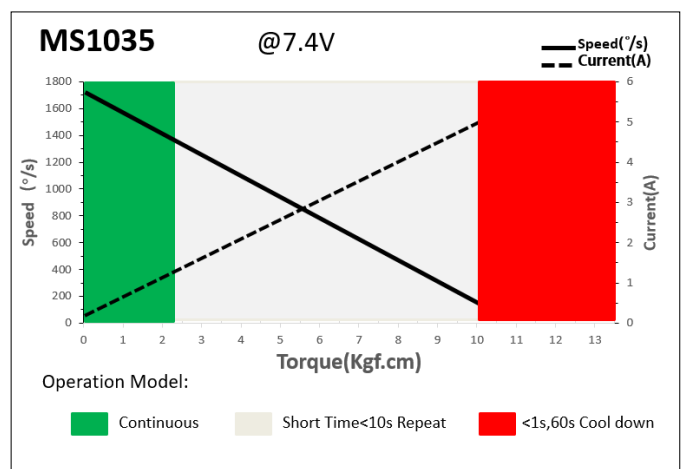
25T 6mm
Output Shaft Spline



1. Operating Data

Rated Voltage	DC7.4V
Voltage Range	DC6.0V-8.4V
Torque	9Kgf.cm@6.0V
	10Kgf.cm@7.4V
	12Kgf.cm@8.4V
Speed	0.040sec/60°@6.0V
	0.035sec/60°@7.4V
	0.030sec/60°@8.4V
Working Frequency	760us/560Hz
Temperature Range	-20°C.....+65°C
Case Material	Aluminum Alloy
Motor Type	Brushless DC Motor
Gear Set Material	Hardened Steel
Position Sensor	Contactless
Ball Bearing	2BB
Case Dimensions	40.5*20*38mm±0.2mm
Weight	72g±10%

2. Performance



3. Command signal PWM Command Interface

Signal Voltage	HIGH: min.3.3V, max.5.0V Low: min.0.0V, max.1.5V
Pulse Lengths	450us-1050us
Working Frequency	760us/560Hz

4. Electrical Connection

 3 2 1	Pin Assignment			
	1	Orange	Signal	PWM Command
	2	Red	DC+	Supply Voltage
	3	Brown	DC-	Supply Ground