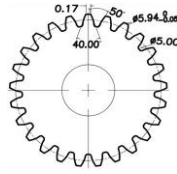
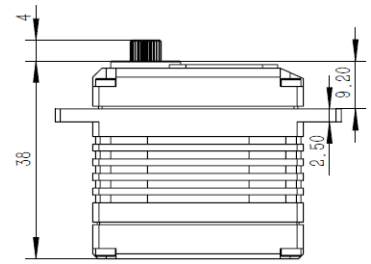
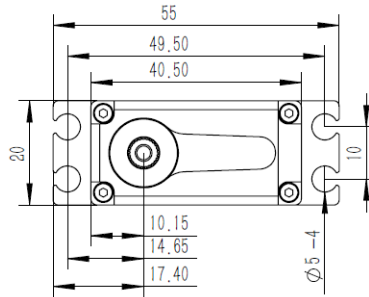


MS3012 Technical Specification



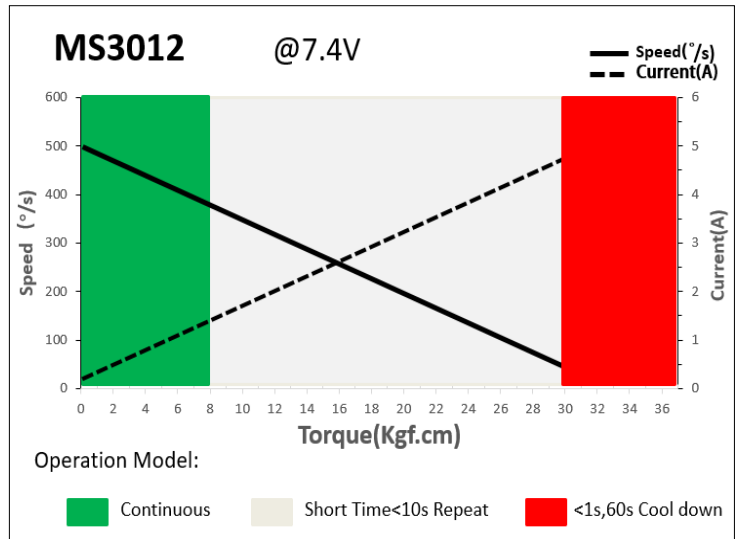
25T-6mm
Output Shaft Spline



1. Operating Data

Rated Voltage	DC7.4V
Voltage Range	DC6.0V-8.4V
Torque	25Kgf.cm@6.0V
	30Kgf.cm@7.4V
	35Kgf.cm@8.4V
Speed	0.15sec/60°@6.0V
	0.12sec/60°@7.4V
	0.11sec/60°@8.4V
Working Frequency	1520us/333Hz
Default Travel Angle	± 50°=100°Total
Temperature Range	-20°C.....+65°C
Case Material	Aluminum Alloy
Motor Type	Brushless DC Motor
Gear Set Material	Hardened Steel
Position Sensor	Contactless
Ball Bearing	2 BB
Case Dimensions	40.5*20*38mm±0.2mm
Weight	72g±10%

2. Performance



3. Command signal

PWM Command Interface

Signal Voltage	TTL-level: HIGH: min.3.3V, max.5.0V Low: min.0.0V, max.1.5V
Pulse Lengths	900us-2100us
Pulse Lengths for Position	1000us/1500us/2000us -50° 0°+50°

4. Electrical Connection

Pin Assignment (PWM)		3 2 1	
		Color	Signal
1	Yellow	SIG	Command Signal
2	Red	DC+	Supply Voltage
3	Brown	DC-(GND)	Supply Ground, Signal Ground