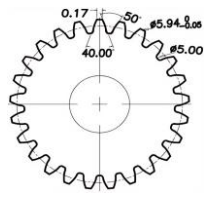
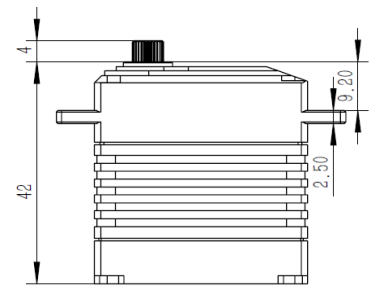
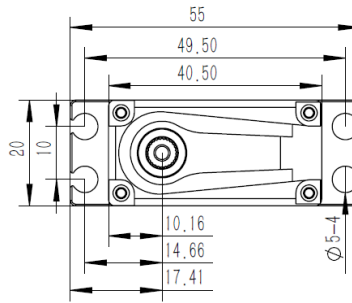


MS4512 Technical Specification



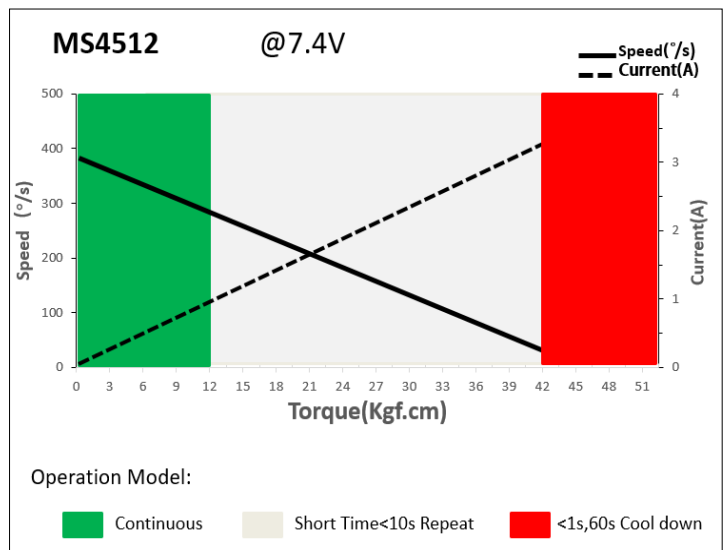
25T-6mm
Output Shaft Spline



1. Operating Data

Rated Voltage	DC7.4V
Voltage Range	DC6.0V-8.4V
Torque	38Kgf.cm@6.0V
	42Kgf.cm@7.4V
	45Kgf.cm@8.4V
Speed	0.18sec/60°@6.0V
	0.16sec/60°@7.4V
	0.14sec/60°@8.4V
Working	1520us/333Hz
Default Travel	± 100°=200°Total
Temperature	-10°C.....+65°C
Case Material	Aluminum Alloy
Motor Type	Coreless DC Motor
Gear Set Material	Hardened Steel
Position Sensor	Potentiometer
Ball Bearing	2 BB
Case Dimensions	40.5*20m*42mm±0.2mm
Weight	78g±10%

2. Performance



3. Command signal

3.1. PWM Command Interface

Signal Voltage	TTL-level: HIGH: min.3.3V, max.5.0V Low: min.0.0V, max.1.5V
Pulse Lengths	500us-2500us
Pulse Lengths for Position	1000us/1500us/2000us -50° 0°+50°

4. Electrical Connection

	Pin Assignment (PWM)			
	1	Yellow	SIG	Command Signal
	2	Red	DC+	Supply Voltage
	3	Brown	DC-(GND)	Supply Ground, Signal Ground