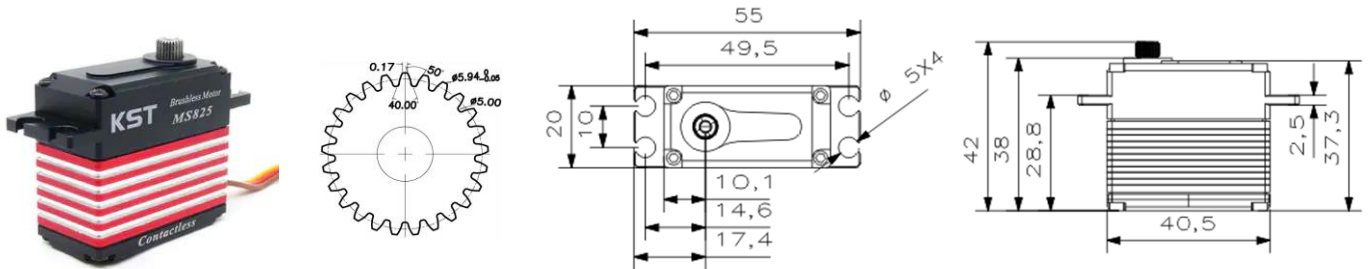


MS825 V8.0 Technical Specification

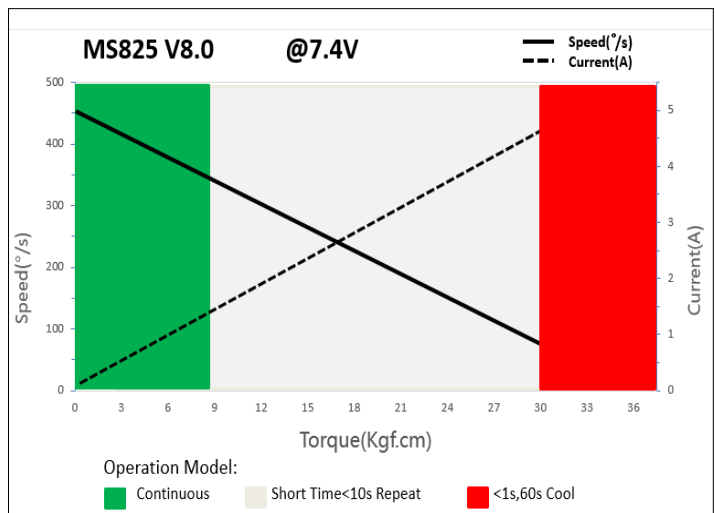


25T 6mm Output Shaft Spline

1. Operating Data

Rated Voltage	DC7.4V
Voltage Range	DC6.0V-8.4V
Stalling Torque	25Kgf.cm@6.0V
	30Kgf.cm @7.4V
	35Kgf.cm @8.4V
No-load Speed	0.15sec/60°@6.0V
	0.13sec/60°@7.4V
	0.11sec/60°@8.4V
Working Frequency	1520us/333Hz
Default Travel Angle	±100°=200° Total
Temperature Range	-20°C.....+65°C
Soft Start	Programmable
Programmable	Yes
Case Material	Aluminum Alloy
Motor Type	Brushless DC Motor
Gear Set Material	Hardened Steel
Position Sensor	Contactless
Case Dimensions	40.5*20*38mm±0.2mm
Weight	70g±10%

2. Performance



3. Command signal

PWM Command Interface

Signal Voltage	HIGH: min.3.3V, max.5.0V Low: min.0.0V, max.1.5V
Pulse Lengths	500us-2500us
Pulse Lengths for Position	500us/1500us/2500us -100° 0°/+100°

4. Electrical Connection

	Pin Assignment			
	1	Orange	Signal	PWM Command
	2	Red	DC+	Supply Voltage
	3	Brown	DC-	Supply Ground